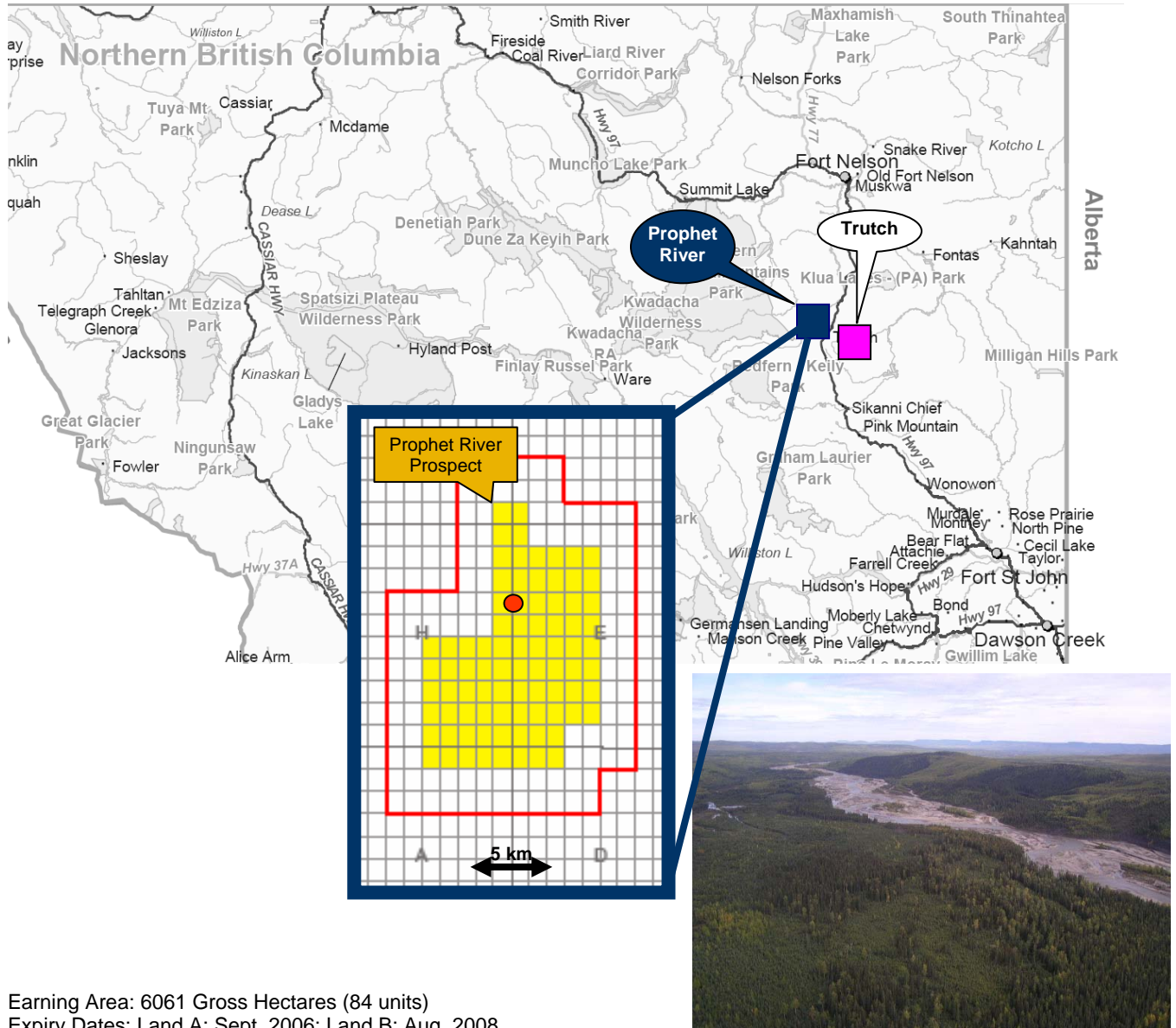




Prophet River Prospect, North Eastern British Columbia



Earning Area: 6061 Gross Hectares (84 units)
 Expiry Dates: Land A: Sept. 2006; Land B: Aug. 2008
 Database: 2D seismic + wells (3-D Seismic program planned)

General Description:

- Large, 4-way-dip closed structure (570 Hectares)
- Primary Target: Slave Point
- Established Slave Point play fairway in prime location for hydrothermal dolomite development
- Targeted reef island includes full Slave Point build-up (~185m, all cycles)
- Porosity prediction supported by seismic amplitude anomalies (120 fold data)
- Multiple secondary gas targets (Halfway, Kiskatinaw, Debolt, Sulphur Pt.)
- Drilling location identified Multiple follow-on potential (3 additional prospects on block, 100-150 bcf Pmean total)
- Main risks: presence & quality of reservoir

CONFIDENTIAL